



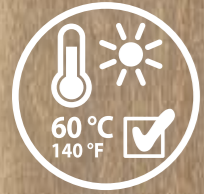
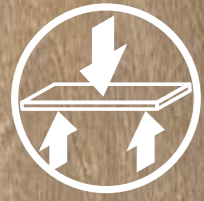
“my  
Reference,,

RIGID 55

LOCK ACOUSTIC

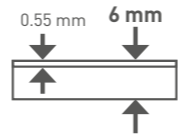
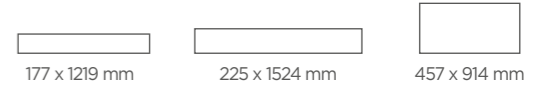
**Gerflor**  
theflooringroup





# RIGID 55

## LOCK ACOUSTIC



<p><b>PUR+ MATT</b></p> <p>Easy maintenance</p>	<p><b>4D DESIGN</b></p> <p>MATT SURFACE</p> <p>Natural look</p> <p>CRISTAL WEAR LAYER</p> <p>High definition design &amp; color</p> <p>STRUCTURED EMBOSS &amp; BEVEL</p> <p>Ultra realistic surface</p> <p>XL FORMAT</p> <p>Wide variety of tiles &amp; planks</p>	<p><b>FULL RIGID CORE TECHNOLOGY</b></p> <p>Rigid</p> <p>60 °C 140 °F Max.</p> <p>The best stability</p> <p>Renovation ceramic 6 mm joint</p>	<p><b>INSULATION ULTRA</b></p> <p>ACOUSTIC BACKING</p> <p>19 dB</p>	<p><b>LOCK SYSTEM</b></p> <p>Standard laminate installation</p>
---	--	---	---	---





**RIGID 55**  
**LOCK ACOUSTIC**

177 x 1219 mm



225 x 1524 mm

457 x 914 mm







KILDA PEARL - 0019

225 x 1524 mm



KILDA CASHMERE - 0018

225 x 1524 mm



KILDA GOLDEN - 0015

225 x 1524 mm



KILDA SMOKED - 0020

225 x 1524 mm



KILDA CASHMERE



KILDA PEARL



KILDA GOLDEN



KILDA SMOKED





PUNO PURE - 0017

225 x 1524 mm



PUNO PURE



PUNO BROWN



PUNO BROWN - 0016

225 x 1524 mm





TRONDHEIM - 0011

457 x 914 mm



NOOSA CORTEN - 0014

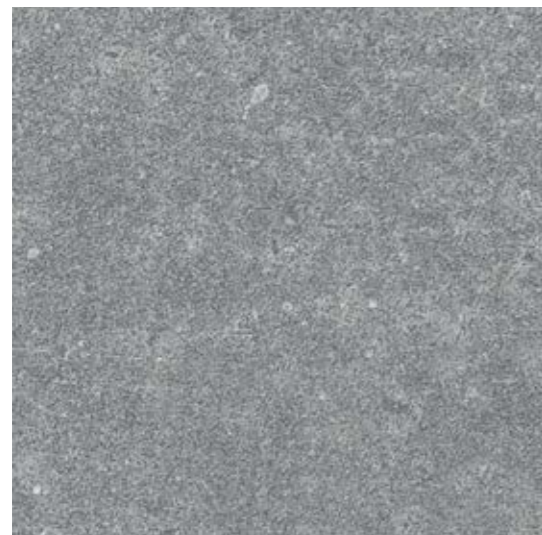
457 x 914 mm



TRONDHEIM

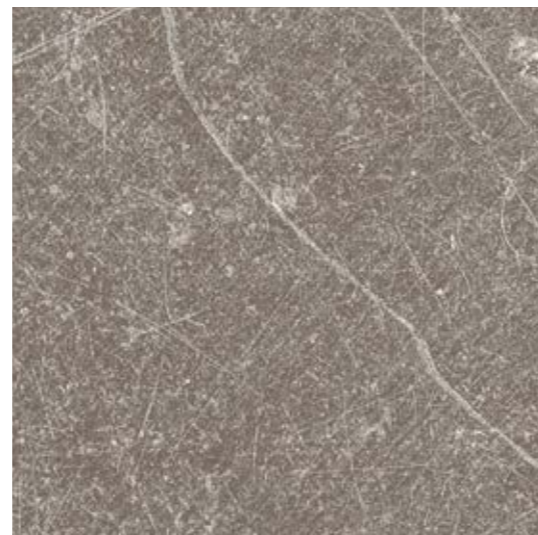


NOOSA CORTEN



GEELONG GREY - 0012

457 x 914 mm



BELLO - 0013

457 x 914 mm



GEELONG GREY



BELLO



RIGID 55 LOCK ACOUSTIC  
CLASSIC WOOD



PUERTO - 0001

177 x 1219 mm



CRUNCHY - 0979

177 x 1219 mm



VIAJO - 0003

177 x 1219 mm



VIAJO GREY - 0009

177 x 1219 mm



SUCRE - 0004

177 x 1219 mm



HOBART - 0002

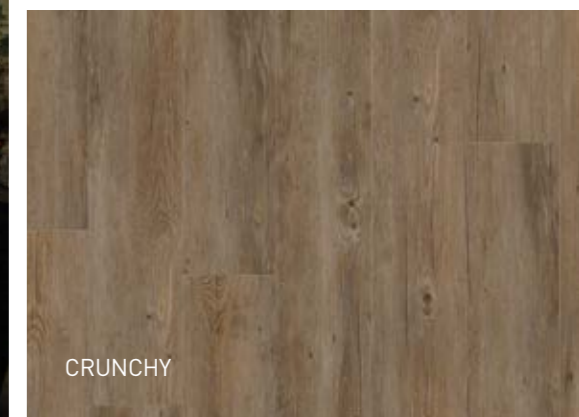
177 x 1219 mm



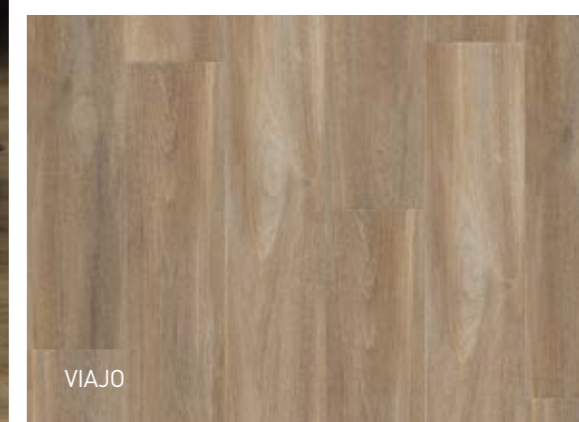
SUCRE



VIAJO GREY



CRUNCHY



VIAJO



RIGID 55 LOCK ACOUSTIC  
RUSTIC WOOD PLANK



SUAVE GREY - 0977

177 x 1219 mm



LOVINA - 0008

177 x 1219 mm



CARTAGO - 0010

177 x 1219 mm



UYUNI TAUPE - 0006

177 x 1219 mm



QUITO - 0007

177 x 1219 mm

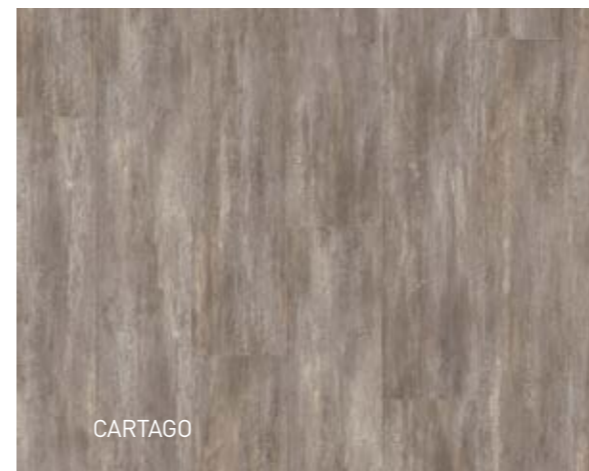


COCHA - 0005

177 x 1219 mm



QUITO



CARTAGO



COCHA



SUAVE GREY



LOVINA



UYUNI TAUPE



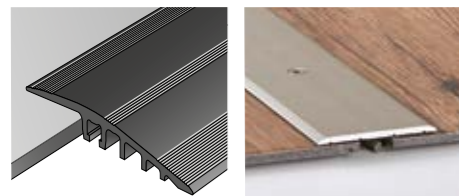


**FOR MORE DETAILS**  
visit [gerflor.com](http://gerflor.com)



LVT Finishes Brochure

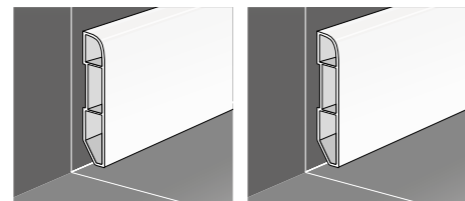
**PROFILES**



**RAMP 5-6MM**  
(aluminium)  
Ref. 0505

**FLAT THRESHOLD\***  
(aluminium)  
Ref. 2570

**DESIGN SKIRTINGS**

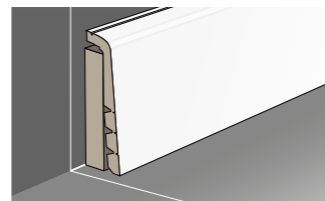


Ref. 6086 + Color code  
(Vinyl)

Ref. 5947 + Color code  
(MDF)

White to paint or  
matching design page 18

**COVERING SKIRTING**



Ref. 2550\*  
(MDF)

**MATTING**

--- 2 TRAFFIC LEVELS --->



**QUICK MAT TILE**  
Ref. 1725 / 1726 / 1727



**LOOSELAY ROMAT GT INSERT KIT**  
Ref. 1719

--->



RIGID 55 LOCK ACOUSTIC  
EQUIVALENC RIGID 55 LOCK SYSTEM & CREATION 55

	RIGID 55 LOCK ACOUSTIC	CREATION 55 GLUE DOWN / CLIC	CREATION 55 LOOSELAY
	CARTAGO - 0010	AMADOR - 0447	AMADOR - 0447
	HOBART - 0002	BALLERINA - 0347	BALLERINA - 0347
	KILDA CASHMERE - 0018	SWISS OAK CASHMERE - 0795	-
	KILDA SMOKED - 0020	SWISS OAK SMOKED - 0847	-
	KILDA PEARL - 0019	SWISS OAK PEARL - 0846	SWISS OAK PEARL - 0846
	KILDA GOLDEN - 0015	SWISS OAK GOLDEN - 0796	SWISS OAK GOLDEN - 0796
	VIAJO - 0003	BOSTONIAN OAK - 0871	-
	VIAJO GREY - 0009	BOSTONIAN OAK GREY - 0855	-
	PUNO BROWN - 0016	CEDAR BROWN - 0850	-
	PUNO PURE - 0017	CEDAR PURE - 0849	-
	BELLO - 0013	CARMEL - 0618	CARMEL - 0618
	QUITO - 0007	ARENA - 0060	ARENA - 0060
	COCHA - 0005	MALUA BAY - 0448	MALUA BAY - 0448
	SUCRE - 0004	TWIST - 0504	SUCRE - 0004
	TRONDHEIM - 0011	NORVEGIAN STONE - 0860	NORVEGIAN STONE - 0860
	NOOSA CORTEN - 0014	RUST CORTEN - 0095	-
	UYUNI TAUPE - 0006	PAINT WOOD TAUPE - 0856	-
	LOVINA - 0008	RANCH - 0456	RANCH - 0456
	PUERTO - 0001	QUARTET - 0503	-
	GEELONG GREY - 0012	BLOOM UNI GREY - 0869	-
	CRUNCHY - 0979	BUFFALO - 0457	-
	SUAVE GREY - 0977	OXFORD - 0061	-

INSTALLATION



LOCK SYSTEM



CUTTING WITH A SAW

RIGID 55 LOCK ACOUSTIC  
TECHNICAL DATA



\* Information sur le niveau d'émission de substances volatiles dans l'air intérieur, présentant un risque de toxicité par inhalation, sur une échelle de classe allant de A+ (très faibles émissions) à C (fortes émissions)

RIGID 55  
LOCK ACOUSTIC

DESCRIPTION / BESCHREIBUNG / BESCHRIJVING / DESCRIPTION / DESCRIPCIÓN / DESCRICÃO / DESCRIZIONE

Total Thickness / Gesamtdicke / Totale dikte / Épaisseur totale / Espesor total / Espessura total / Spessore totale	EN ISO 24346	mm	6.00		
Thickness of the wearlayer / Dicke der Nutzschrift / Dikte van de slijtlaag / Épaisseur couche d'usure / Espesor capa de uso / Espessura camada de desgaste / Spessore strato di usura	EN ISO 24340	mm	0.55		
Weight / Flächengewicht / Gewicht / Poids / Peso / Peso / Peso	EN ISO 23997	g/m <sup>2</sup>	9480		
Size / Format / Afmetingen / Format / Dimensiones / Dimensões / Dimensioe	ISO 24342	mm	177x1219	225x1524	457x914
Number of planks/tiles and sqm per box	-	-	8 / 1.73 m <sup>2</sup>	5 / 1.71 m <sup>2</sup>	4 / 1.67 m <sup>2</sup>

CLASSIFICATION / KLASSIFIKATION / CLASSIFICATIE / CLASSIFICATION / CLASIFICACIONES / CLASSIFICAÇÕES / CLASSIFICAZIONI

Norm/Product Specification / Produktnorm / Technische eigenschappen / Norme/ Spécification produit / Normas / Normas / Norma prodotto	-	-	EN ISO 10582		
European Classification / Europäische Klassifizierung / Europese classificatie / Clasement européen / Classificação europea / Classificação Europeia / Europea	EN ISO 10874	Class	33 - 42		
Fire Rating / Brandverhalten / Brand classificatie / Classement Feu / Fuego / Fogo / Reazione al fuoco	EN 13 501-1	Class	Bfl-s1		
Static Electrical Propensity / Begehaufladung / Elektrische eigenschappen / Potentiel de charge / Comportamiento electrostático / Comportamento electrostático / Resistenza elettrica	EN 1815	kV	< 2		
Slip Resistance Wet / Rutschhemmung / Anti-slip / Glissance humide / Deslizamiento húmedo / Escorregamento húmido / Scivolosità umida	DIN 51130	Class	R10 <sup>II</sup>		

PERFORMANCES / TECHNISCHE EIGENSCHAFTEN / TESTRESULTAAT / PERFORMANCE / CUALIDADES TÉCNICAS / PERFORMANCES / CARATTERISTICHE TECNICHE

Wear Resistance / Verschleißverhalten / Slijtvastheid / Résistance à l'usure / Abrasión / Abrasão / Resistenza all'abrasione	EN 660.2	mm <sup>2</sup>	≤ 2.0		
Wear Group / Verschleißgruppe / Groep slijtvastheid / Groupe d'abrasion / Grupo de abrasión / Grupo de abrasão / Gruppo di abrasione	-	group	T		
Type Binder content / Bindemittelgehalt / Teneur en agent liant / Contenido en ligante / Conteúdo em ligante	EN ISO 10582	type	I		
Room Impact / Raumschall / Loopgeluid / Sonorité à la marche / Rumore al calpestio / Sonoridad en la pisada / Sonoridade ao andar	NF S 31074	dB	81		
Impact sound insulation / Trittschallverbesserungsmaß / Geluidsisolatie / Isolation acoustique bruits de chocs / Acústica / Isolamento acústico	EN ISO 717-2	dB	19		
Dimensional Stability (norm) / Maßstabilität / Maatvastheid / Stabilité dimensionnelle / Estabilidad dimensional / Estabilidade dimensional / Stabilità dimensionale	EN ISO 23999	%	≤ 0.15		
Dimensional Stability (average measured value) / Maßstabilität / Maatvastheid / Stabilité dimensionnelle / Estabilidad dimensional / Estabilidade dimensional / Stabilità dimensionale	-	-	≤ 0.05		
Residual Indentation / Resteindruck / Indrukbelasting / Poinçonnement statique rémanent / Punzonamiento / Punçamento / Impronta	EN ISO 24343-1	mm	≤ 0.10		
Castor chair test / Stuhlrollenbeanspruchung / Rolweerstand bureaustoelen / Essai de la chaise à roulettes / Determinación del efecto de una silla con ruedas / Resistência a cadeiras de rodas / Resistenza al passaggio di sed (Type W)	ISO 4918	-	OK		
Thermal Conductivity / Wärmeleitfähigkeit / Thermische weerstand / Conductivité thermique / Conductividad térmica / Condutividade térmica / Resistenza termica / Värmeledningsmotstånd / Värmestånd	EN ISO 10456	W/(m.K)	0.25		
Colour Fastness / Lichtechtheit / Lichtechtheid / Solidité lumière / Resistencia a la luz / Estabilidade das cores / Solidità alla luce	EN 20 105 - B02	degree	≥ 6		
Surface Treatment / Oberflächenvergütung / Oppervlaktebehandling / Traitement de surface / Tratamiento de superficie / Tratamento de superficie / Trattamento di superficie	-	-	PUR+ Matt		
Chemical Products Resistance / Verhalten gegenüber Chemikalien / Chemische beständigheid / Résistance aux produits chimiques / Resistencia a los productos químicos / Resistência aos produtos químicos / Resistenza ai prodotti chimici <sup>(2)</sup>	EN ISO 26987	-	OK		

ENVIRONMENT/INDOOR AIR QUALITY / UMWELT/RAUMLUFTQUALITÄT / ENVIRONNEMENT/QUALITE DE L'AIR INTERIEUR / MEDIO AMBIENTE/CALIDAD INTERIOR DEL AIRE INTERIOR / MEIO AMBIENTE/QUALIDADE DO AR INTERIOR

TVOC after 28 days / TVOC (28 Tage) / TVOC (28 dagen) / TVOC après 28 jours / TVOC (28 dias) / TVOC (28 dias) / TVOC (28 giorni) / TVOC (28 dagar) / TVOC (28 dager)	ISO 16000-6	micrograms/m <sup>3</sup>	< 100		
--	-------------	---------------------------	-------	--	--

CE MARKING / CE KENNZEICHNUNG / EG\_CONFORMITEITSMERK / MARQUAGE CE / MARCA DE CONFORMIDAD CE / MARCA DE CONFORMIDADE CE / MARCATURA CE DI CONFORMITA

CE	EN 14041	-				
----	----------	---	--	--	--	--

(1) Glissance humide / Slip resistance wet / Rutschhemmung : details sur site gerflor.com / details on website gerflor.com / Einzelheiten auf der web-site gerflor.com  
(2) Beständig gegenüber nicht färbenden alkoholhaltigen Handdesinfektionsmitteln, Haushaltschemikalien und verdünnten Säuren und Laugen bei kurzzeitiger Einwirkung.



## Visualize your reference



[interiordesigner.gerflor.com](http://interiordesigner.gerflor.com)

**30 years experience**  
Since 1985

**Manufacturer**  
3 LVT Factories

**World Class Logistics**  
12 Logistics Hubs

**Gerflor Design Centre**  
Exclusive Designs



**“Serenity,,**  
Elodie - **End User**



**“Time saving,,**  
Mika - **Installer**



**“Unique Design,,**  
Pierre - **Architect**



**“Confidence,,**  
Claire - **Store Manager**



**“Reliability,,**  
Lucas - **Distributor**

That's why Gerflor is our **Reference**

**Gerflor International**  
Tel: +33 (0)4 74 05 40 00  
Fax: +33 (0)4 74 05 03 13  
e-mail: [gerflorcontract@gerflor.com](mailto:gerflorcontract@gerflor.com)  
**gerflor.com**

**Gerflor**<sup>®</sup>  
theflooringgroup